



SJC Security Installations Ltd

HIKVISION

Contents

1. HikCentral Professional
2. Office solution
3. Density Control Solution
4. Mask Detection Solution
5. Digital Display Solution

34 Parsonage Drive
Cofton Hackett Birmingham
B45 8AR

Tel: - 0121 769 1064

Email: - info@sjcinstall.co.uk

Web: - www.sjcinstall.co.uk





What is HikCentral Professional

HikCentral Professional, Hikvision's software platform for integrating and managing security systems, is designed to meet a variety of security challenges in one place. On the platform, you can manage individual systems such as video security, access control, security alarms, and more, as well as explore cross-system functionalities. While facilitating protection of people and property, it makes daily operations more efficient and helps users of all kinds to make smarter decisions.

System Architecture

01

Light and efficient

HikCentral Professional employs a lightweight architecture that features a reduced consumption of system resources. It is capable of managing systems of varying size with consistent efficiency.

03

Integrated and open

The platform is compatible with virtually all Hikvision products and their rich applications, including deep-learning-based analytics and statistics. The platform's open architecture permits easy integration with 3rd-party systems (OpenAPI/Database) and hardware (ONVIF).

02

Unified and flexible

The platform supports assembling various application plug-ins under a unified, on-demand architecture for collaboration across business segments. What's more, new plug-ins can be constantly developed to meet new business needs.

Versatile applications cover a broad range of business needs



Nine major applications to choose from

All major security needs are covered through nine core security modules, including video, access control, visitor, attendance, entrance & exit, security alarm, intelligence analysis, digital signage, and maintenance. Whatever your situation, you will find what you need here.

A unified security system that enhances management operations

All applications can be connected in an interactive way to build a truly unified architecture, enhancing your operational efficiency – for example, an intrusion alarm and access control with video verification, or perhaps visitor control with pre-registration of vehicles, and much more.



Key Benefits

Streamlines operations and management

With situational awareness powered by informative dashboards and interactive E-maps, optimal approaches advised by operation wizards, and the flexibility of a user-defined control panel, you can make smarter decisions fluidly and efficiently.



01



02

Simplifies deployment and maintenance

With a minimum system requirement of Intel i3 CPU and 8 GB RAM, you can have your own security platform deployed with limited hardware cost. Moreover, maintenance of the whole system is much easier with visualized health monitoring in real time.

Scales as business grows

By virtue of a flexible and scalable architecture, the platform can be scaled as your business needs evolve. You can expand it from a small 32-channel, 8-door system to an ultra-large-scale system that links up to 100,000 channels of equipment (under the RSM mode).

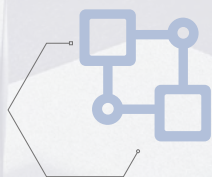


Promises security and reliability

Feel secured with advanced system protection by constant encryption of data and privacy, along with comprehensive redundancy and disaster recovery mechanisms. You can be assured of your business continuity.



03



04

Facilitates hassle-free integration

Through an open architecture design and a series of highly adaptive OpenAPI interfaces, you will enjoy hassle-free integration with a wide range of third-party systems such as ARC and payroll systems.



05





User-centric design ensures personalized and optimized experience



Personalized security management

Whatever your role – manager, decision maker, HR, receptionist, security, or maintenance staff – HikCentral Professional will help you get up and running quickly with pre-set modes. What's more, users can customize their own system with the applications needed and create a personal control panel for their specific duties and routines, empowering staff with custom, optimized management approaches.

Visualized systems, data, and maintenance

Data collected from various applications becomes easy to understand via dynamic reports and helpful, intuitive dashboards. The dashboard supports creating your personalized display for the information you care about the most, contributing to smarter decision making with more situational awareness.



Interactive E-maps

Interactive E-maps give users an instant and dynamic view of multiple sites and the status of multiple devices at the same time, as well as a shortcut to handle events and alarms directly onboard. It enables management and security staff to get accurate and timely notifications while responding to incidents promptly, enhancing day-to-day operational efficiency.

Light but powerful software simplifies installation and maintenance

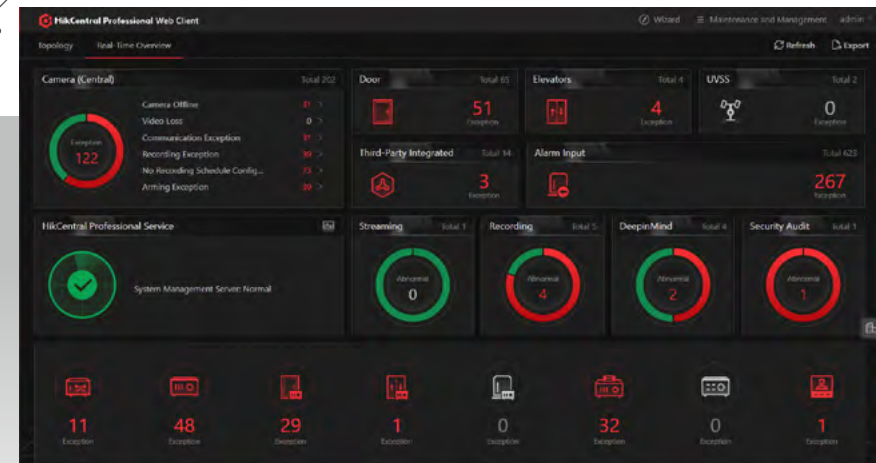


Easy installation

Minimum system requirements for HikCentral Professional is i3 CPU, 8 GB RAM.

Easy maintenance

The system health status is displayed visually in real time, contributing to faster notifications and locating of abnormal situations. What's more, all system history records are trackable.

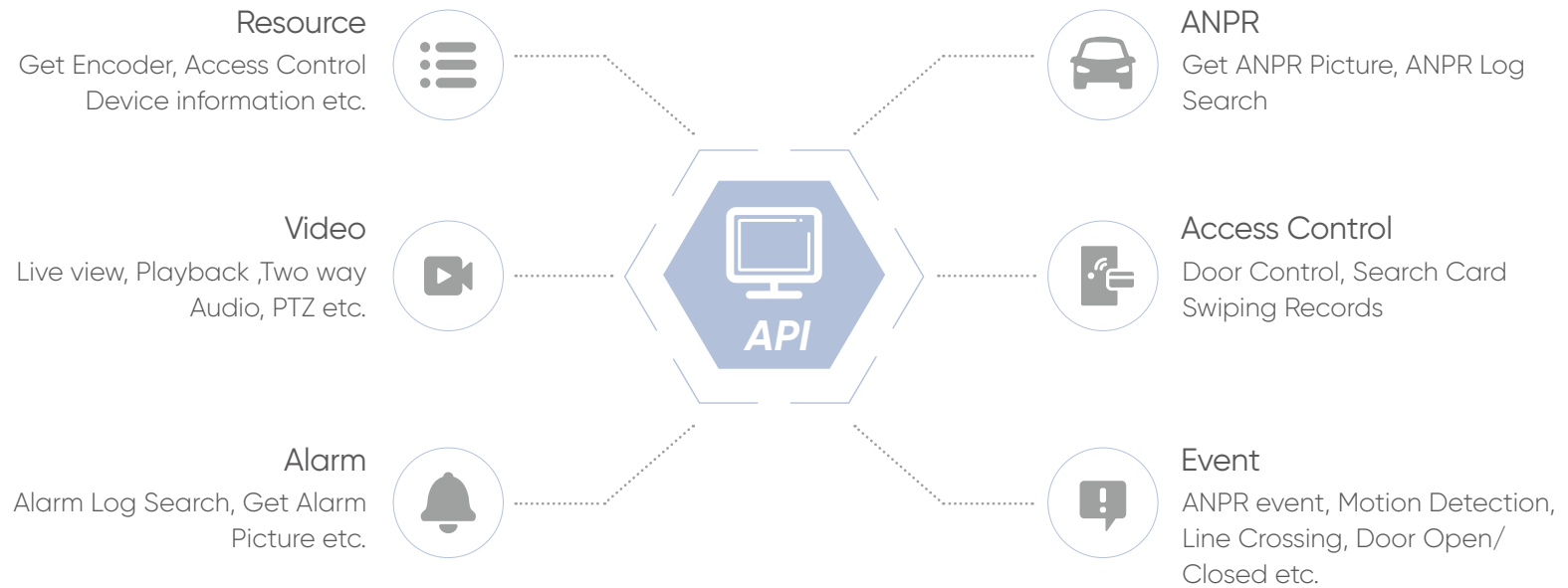




Open system architecture allows easy and convenient integration

Open API

Collaborative, goal-oriented development creates the most useful and customizable applications. Hikvision has created an open Software Development Kit for innovated systems to meet any particularized demand.



Video

Efficient and comprehensive video surveillance

Quickly save operating scenes and efficiently complete daily monitoring. Users can customize their own view to have a holographic perception of all videos, maps and data. The monitoring views of specific scenes can be opened in one second for quick preview and playback.

Low bandwidth network adaptability

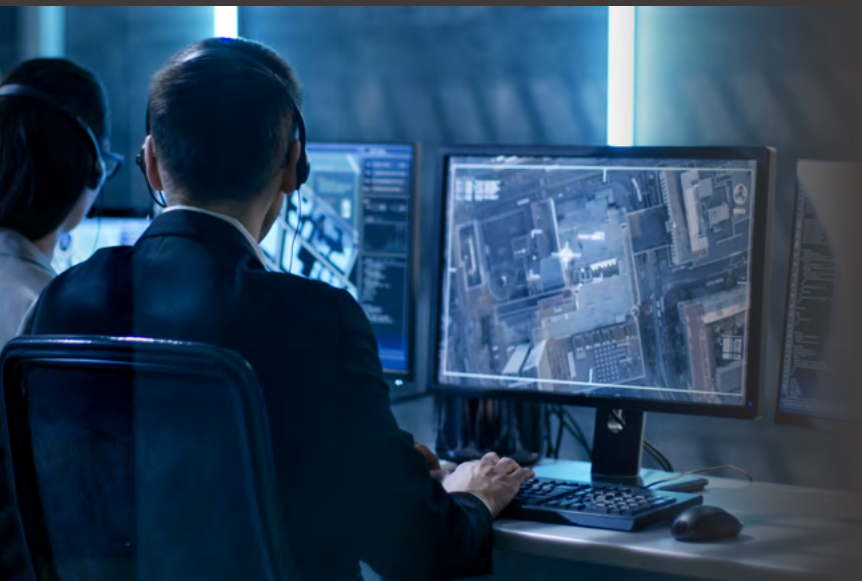
Smooth Streaming automatically adjusts bitrate and resolution between clients and NVRs / IPCs according to real-time network conditions.

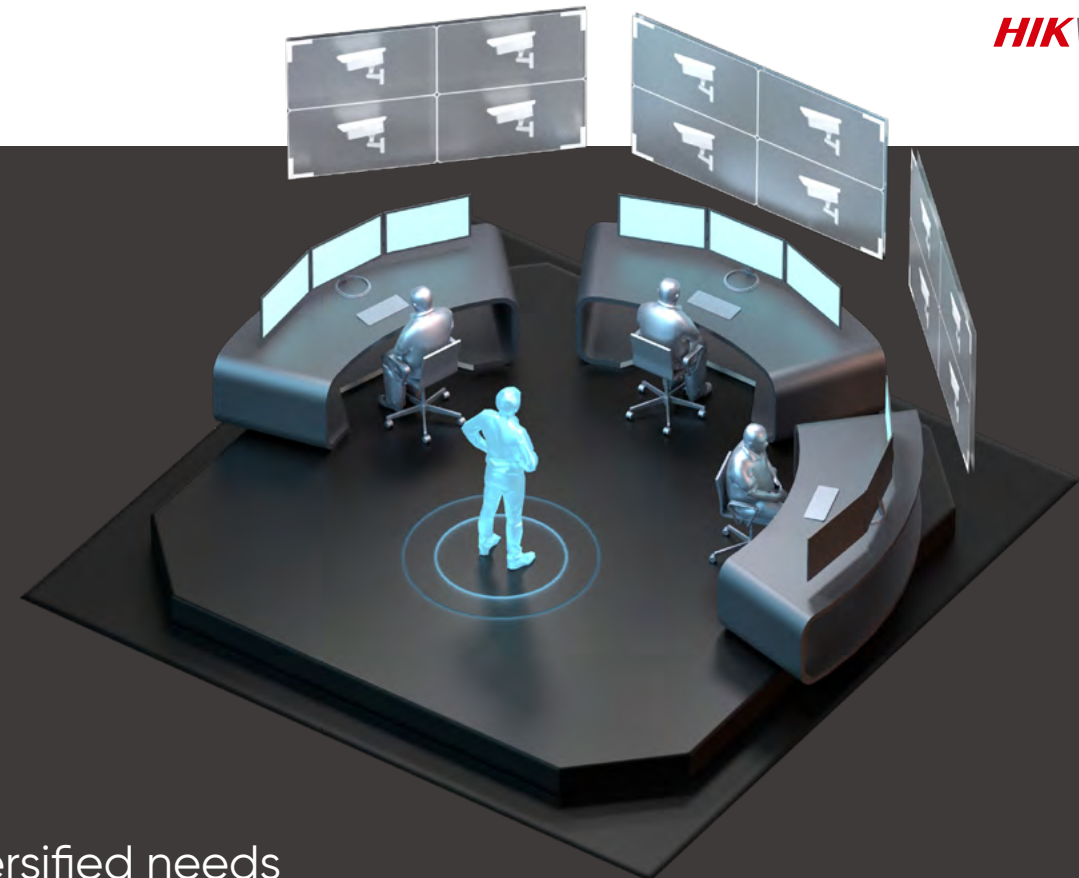
Quick and convenient search and playback

- Quick incident search and location using thumbnails, supporting sub-stream, transcoded, and frame-extracting playback
- Convenient event search based on tags and VCA search analysis, as well as key attributes of vehicles and persons
- Quick go-through of video based on event types, which reduces potential risks by locating top-frequency events in top-frequency areas

VCA Search

"After-the-fact" VCA search provides convenient analysis, including motion analysis, line crossing detection, intrusion detection and more.





Video Export as Evidence

- Supports merging several clips into one video file for downloading, making management flow simpler and easier
- File export is available in various formats including exe., avi., mp4, and more

Reliable storage satisfying diversified needs



Flexible Storage

HikCentral Professional offers event-triggered video recording and playback, along with automated video backup during idle periods. Channel-based video and image storage can be configured as well.



Multiple Storage Media

Video and images can be stored on various media storage platforms, such as NVRs/DVRs, pStor, Hybrid SAN, and Cluster Storage Servers.



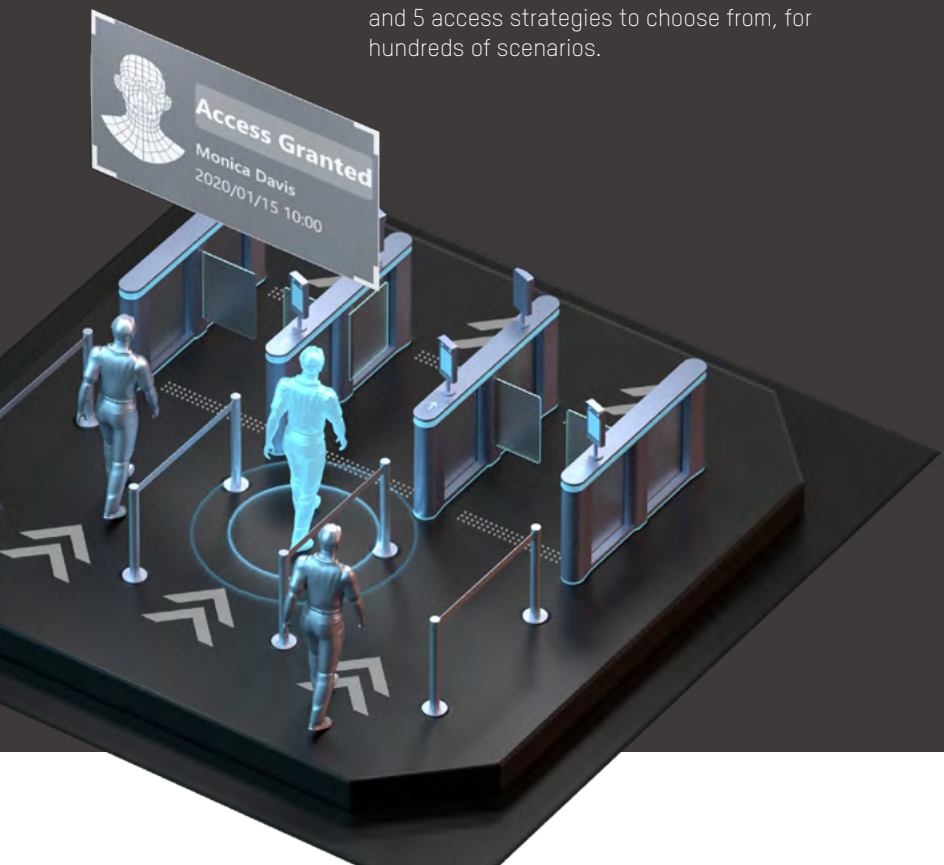
High Availability

HikCentral Professional features a fail-safe / high availability design with redundant remote & local backup and scheduled copy-back, along with pStor cluster services and NVR hot swapping.

➤ Access control

Comprehensive and flexible access management

Users are able to customize a comprehensive access control system for employees and visitors with 5 credentials, 512 authentications, and 5 access strategies to choose from, for hundreds of scenarios.



Easy credential assignment

The whole process of credential assignment is easy and user-friendly with clear, step-by-step guidance. And the credential overview module enables users to quickly locate and handle abnormal credentials.

Convenient personnel management

Employees, and other personnel can scan the QR code generated by HikCentral Professional and register their information remotely. Upon approval of the administrator, they can get the access permissions instantly or at a pre-set time.

Quick alarm handling

When incidents occur, the access control system will trigger IP cameras to take pictures and record videos. Security staff can check the video in real time and take prompt actions if needed.



Attendance



Flexible rule setting

Users can schedule attendance rules for normal, man-hour, multiple, or temporary shifts based on specific scenarios for offices, factories, stores, and more.

Diversified attendance reports

Users can choose from up to 17 kinds of attendance reports, covering major business scenarios. Attendance files can be exported in Excel, PDF, and CSV formats and more.

Integration with third-party systems

HikCentral integrates widely with third-party software systems such as salary calculation systems, meeting complex demands of a variety of businesses.

Visitor

Efficient visitor management

Digitalized visitor management reduces paperwork as well as costs. Visitors can complete their registration in advance and pass through accessible areas as soon as they arrive, enjoying a better experience. Visitors registered beforehand can quickly re-register later to enhance efficiency.

Manage your visitors in a secure way

Visitors are only allowed to enter areas they are given access. Their visiting history is also traceable, adding to overall security.

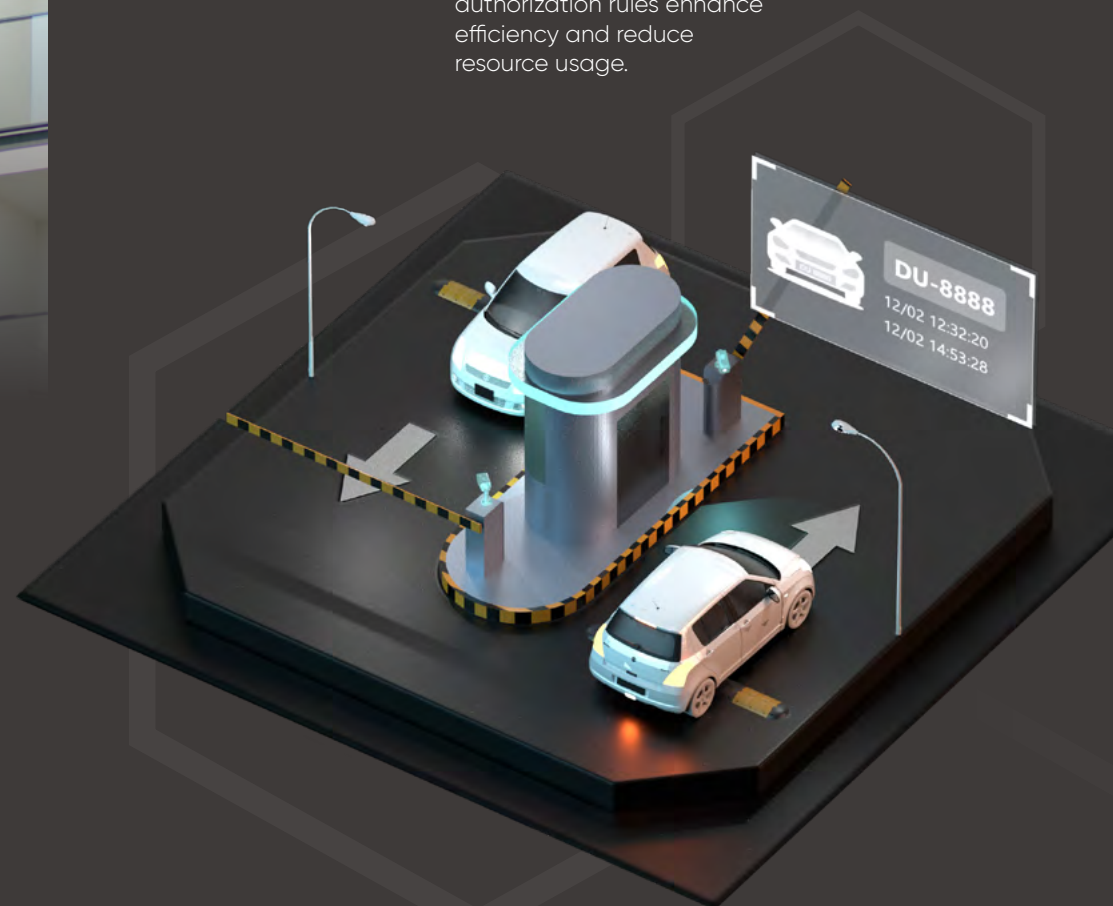


Video intercom

- Serves as a centralized platform to manage the video intercom system
- Supports configuring related devices and setting rules for device interaction
- Pushes calls from the indoor or outdoor station to the management staff

Vehicle

Flexible entrance modes and authorization rules enhance efficiency and reduce resource usage.





Vehicle entrance & exit management

Users can customize release rules for authorized and unauthorized vehicles discretely. Temporary vehicles can call the management center via intercom and get permissions as needed.

Leasing agreement management

Supports configurations for parking space allowance where multiple companies lease parking spaces

Information display

Displays welcome message and vehicle information on LED screen

Alarm management

Supported alarms include Overstated Parking, Park in Forbidden Period and Call Center

Strong capacity

Supports up to 8 traffic lanes and relays events triggered by ANPR cameras, video intercoms and access control devices

Booth Mode

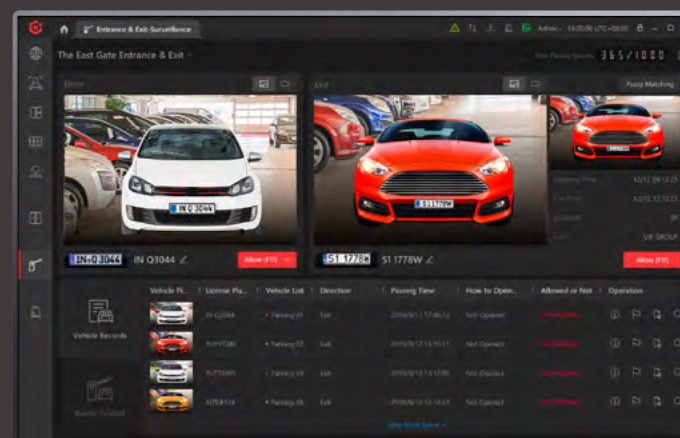
In the professional Watchhouse mode, all entrance & exit related information is compiled to help staff quickly let vehicles exit.

Information display of passing vehicles

Displays images and real-time video of passing vehicles, supporting manual verification

General matching

General preliminary comparison match for vehicles not fully recognized when exiting



Manual release

Supports manual release and records the justification

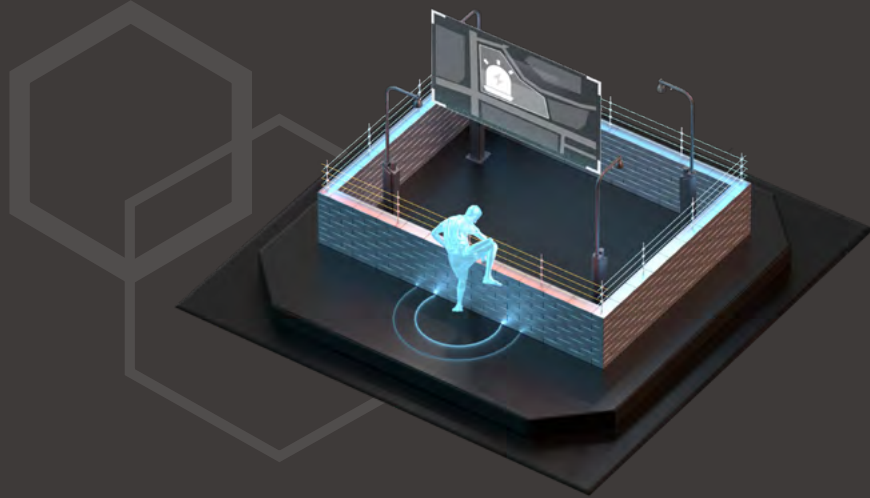
Displays remaining parking spaces

Shows number of remaining parking spaces in real-time

Historical record search

Easy and efficient history tracking

Security alarm



Alarm Sources

HikCentral Professional can centrally manage various alarm sources, such as video, access control, alarm panels, and third-party alarm inputs.

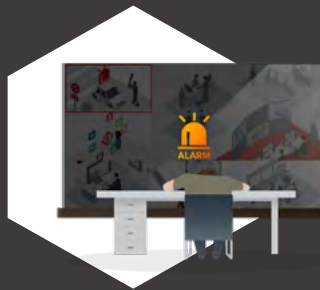
Alarm Center

- Real-time display of all kinds of alarms
- Linked videos and locations will be displayed automatically when an alarm is selected

Alarm Linkage

- Flexible linkage with access control devices, cameras, and more can be configured
- Displays the status of alarm-triggering devices and quickly locates devices that have triggered alarms

Composite Alarm



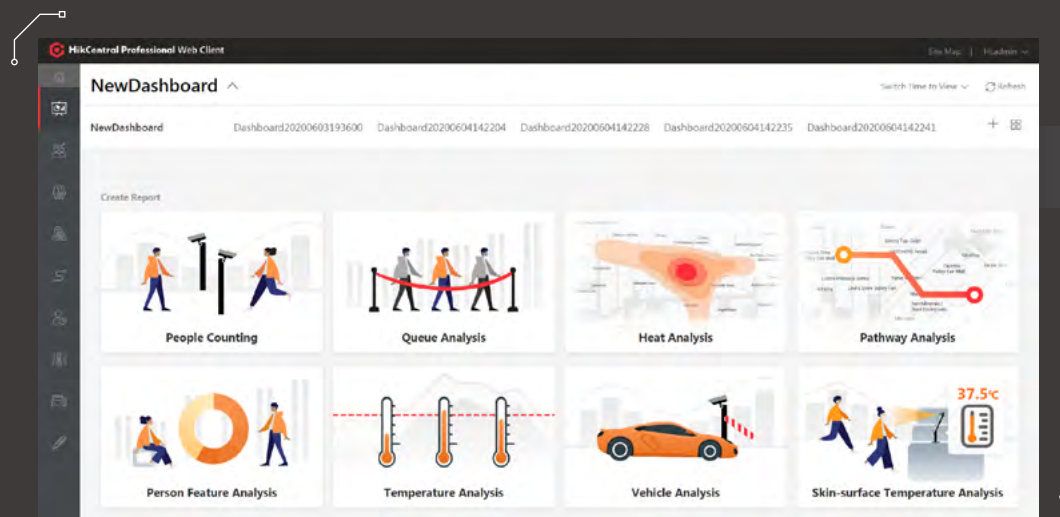
A composite alarm enables arming or disarming in order to promote flexibility and accuracy of alarm management. For example, you may use composite I/O signals and motion detection events by installing infrared beams, effectively reducing the false alarm rate.



Alarm Escalation

Alarm escalation takes place when the primary operator does not respond. An unprocessed alarm will be forwarded and escalated to upper level management when the original operator ignores.

▶ Intelligent analysis



Intelligent Analysis Dashboard

- The video-based intelligent analysis dashboard enables flexible and extensible digital applications
- Including smart commercial analysis like flow, attribute, wait-time, and visitor trend analyses, as well as vehicle management and temperature measurement

▶ Digital signage



- Eight types of pre-installed program templates are ready for use, saving time and money
- All programs are created visually, making advertisement creation, temperature screening, flow control, attendance, and other functions easier and more efficient.

HIKVISION[®]

Office Security
Applications



Contents



Requirement Analysis



Solution Introduction



Application Summary



Product Cases

Requirement Trends

Higher Security Level

- Lack of 7*24h video surveillance, especially in the darkness environment at night
- Hard to trigger alarm in real time when valuable assets are stolen

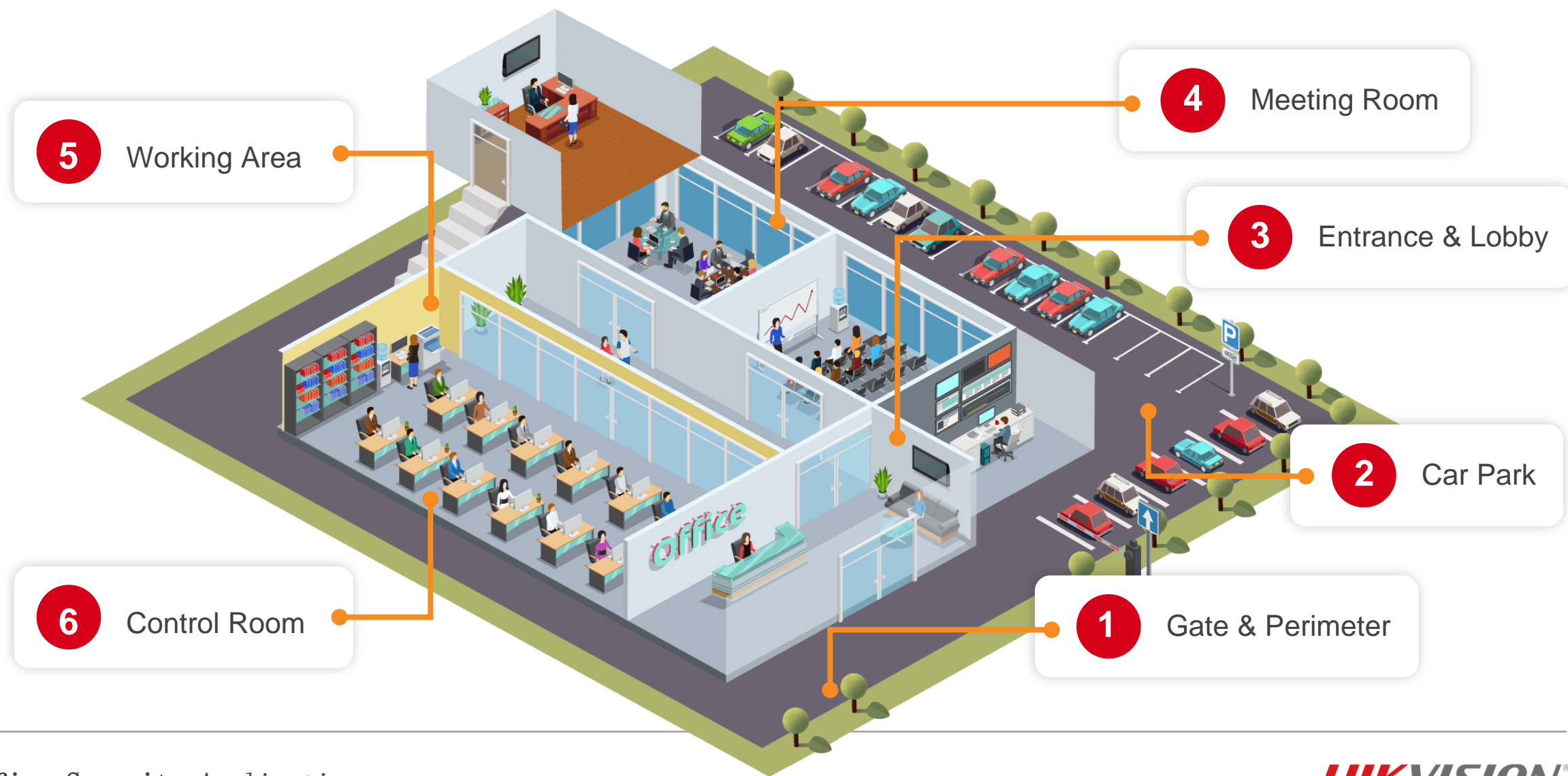
Higher Operation Efficiency

- Low efficiency of daily inspection by security guards
- Low efficiency of device maintenance because large amount

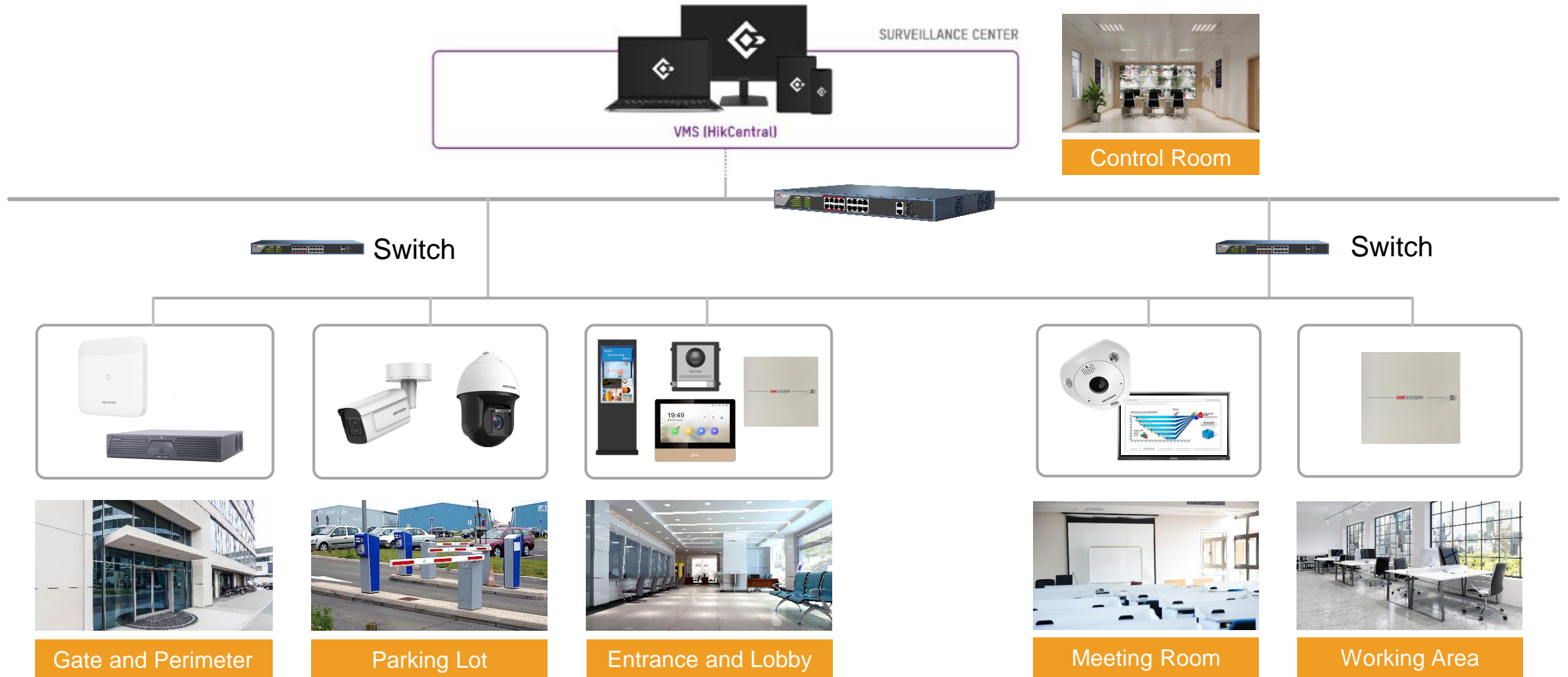
Better User Experience

- Poor experience of employees

Application Scenarios



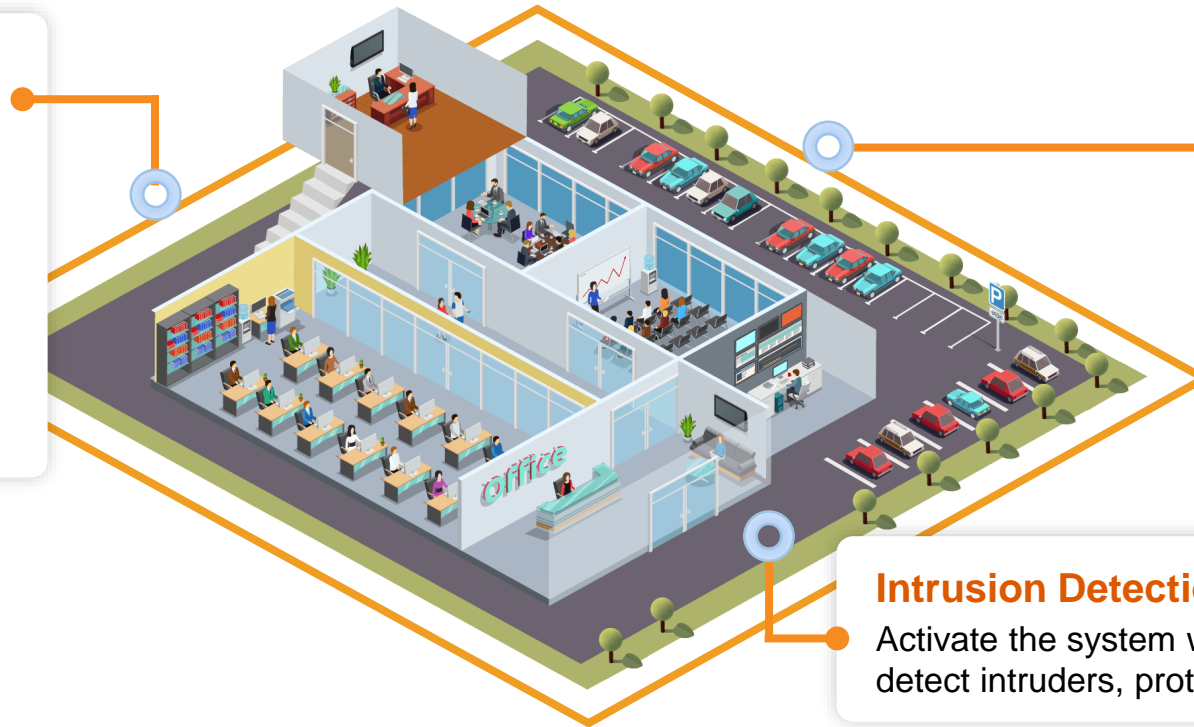
System Architecture



Gate & Perimeter

Perimeter Protection

Traditional video based intrusion detection is subject to various types of interference greatly, like birds flying by, cats/dogs running by, light changing, trees shaking, shadow moving, etc., resulting in high false rate. False alarm reduction technology can analyze the intrusion factor with AI technology, reducing false alarms and only leave real alarms caused by human and vehicle, thus raising alarm accuracy.



Intrusion Detection

Activate the system when off work to detect intruders, protecting the valuables.

Gate & Perimeter-Perimeter Detection

DeepinMind NVR



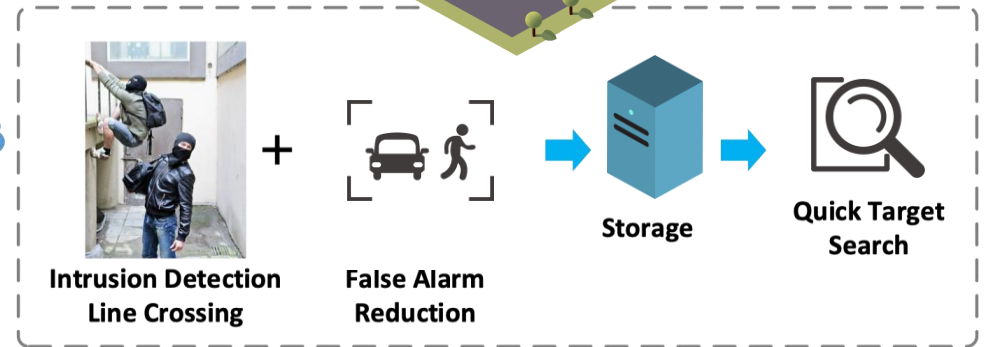
- Receives intrusion and line crossing detection information from cameras, and identifies humans and vehicles in the video to reduce false alarms
- Saves on costs and time compared with conventional CCTV systems

HD IP Camera



VMS

Switch



DeepinMind Series



Display

Network Cable
HDMI/VGA Cable

Entrance & Lobby



Digital Signage

Broadcast a range of advertisements instantly or as scheduled.

Time Attendance

Get time attendance report .

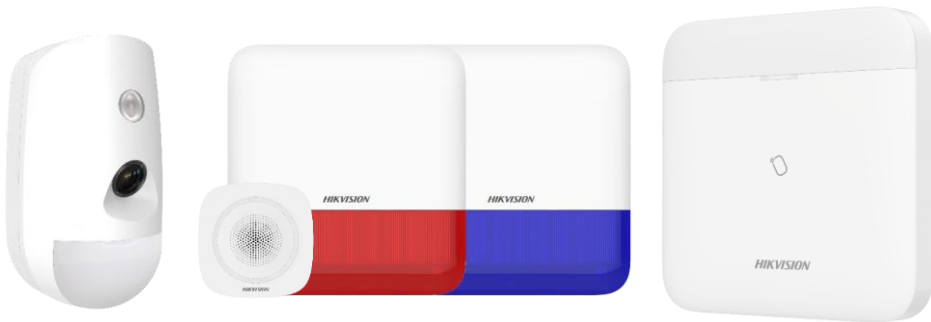
Intercom

Enable communications with office staff

Entrance & Lobby - Intrusion Detection

Non-CCTV Detection Server for Privacy Protection

AX PRO is a new generation wireless alarm system which supports 2 independent wireless communication channels. This ensures there is no interference across channels and allows super-fast transmission of alarm messages and videos simultaneously. The AX PRO provides an ideal intrusion protection solution, ideal for office facilities. With its minimalist design and superior detector compatibility, it is able to connect a variety of security peripherals to enhance safety.



AX Pro Intrusion Detection

- Conventional alarm verification: Give user phone call or send guard to end-user site to verify an event.
- New alarm verification: Send 7s recording video via app and email to end-user app or ARC to verify alarm event.

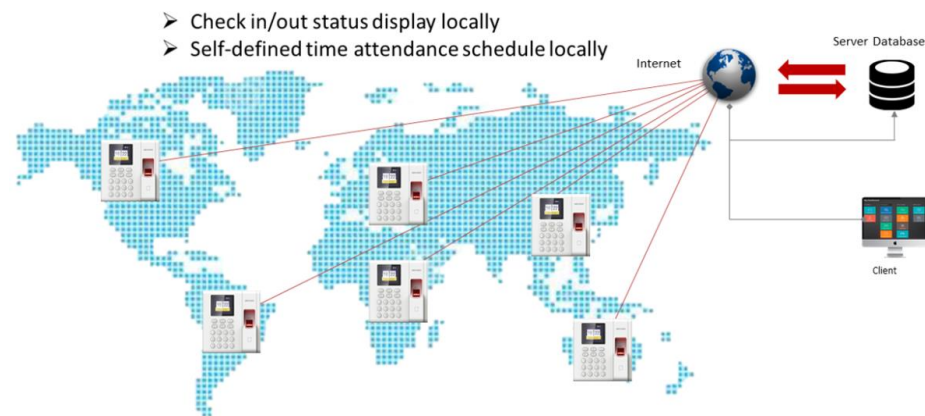
Entrance & Lobby- Time Attendance

Pro Series Access Control

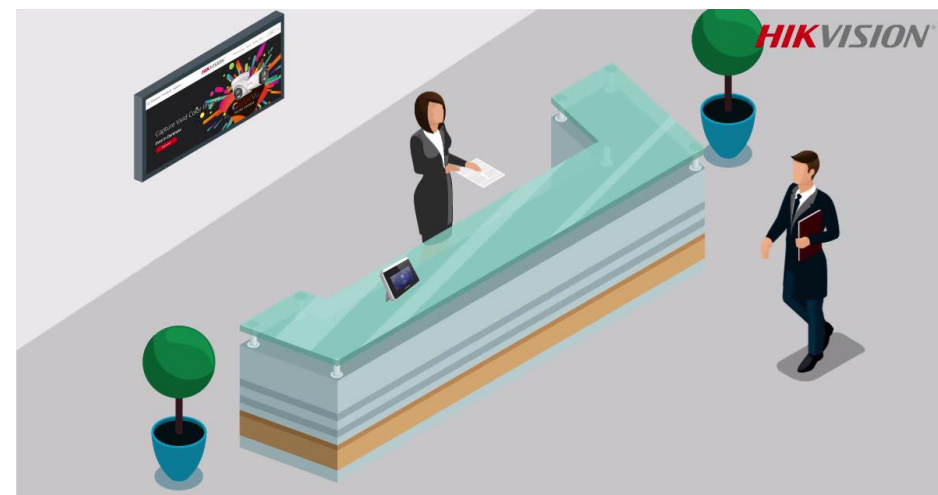


Time attendance.
Send attendance report to
your email automatically
as your need

- Get attendance report on software remotely
- Access control function, release door on Hik-Connect App remotely
- Time attendance status display (Check in/out, Break out/in, Overtime in/out)
- Elegant appearance with high quality
- Standalone IP based terminal



Transfer Time Attendance Data Via Ehome5.0 on public network



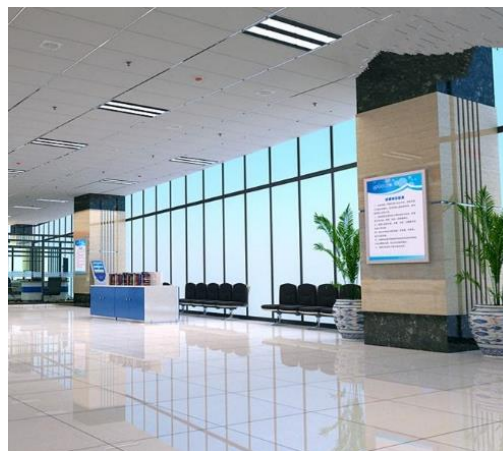
Entrance & Lobby - Advertising Display

Digital Signage



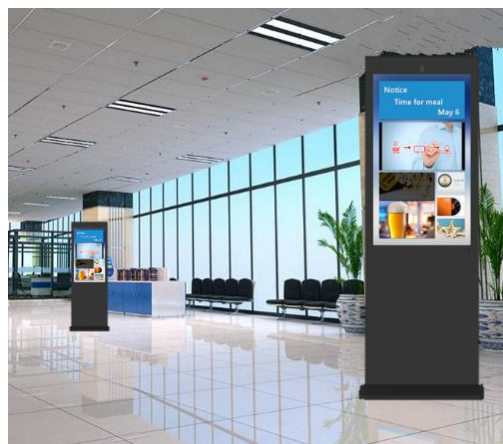
Shows **advertisements** and releases **notices**.

1. Personalised layout with multiple content blocks
2. Free management software
3. Display schedule can be set by the hour, day, or week



Conventional Advertising

- Difficult to install and change
- Only support images and texts



New Advertising

- Easy to install and change
- Supports displaying video, animation, images and texts

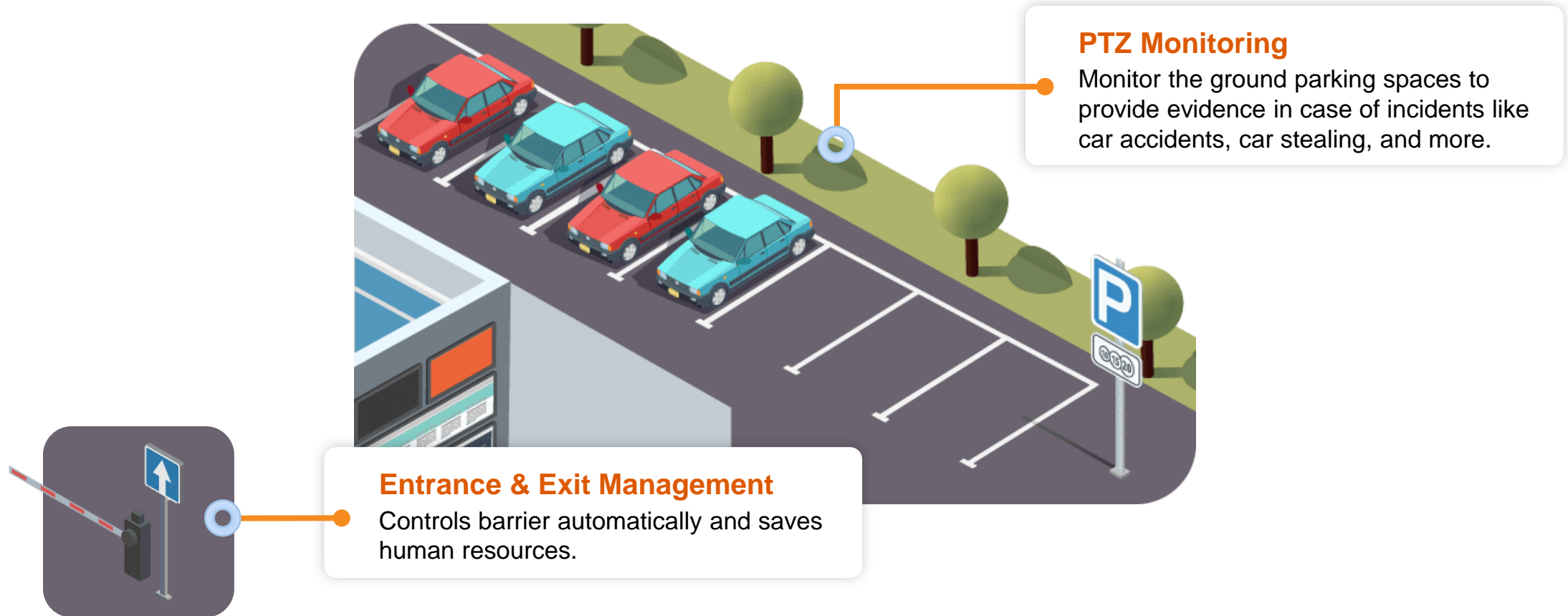
Entrance & Lobby - Intercom

Intercom

- Noise suppression and echo cancellation
- Low illumination
- Premium tempered glass
- Aerospace-grade aluminum



Car Park



Car Park - PTZ Monitoring

DarkFighter PTZ



Captures **bright and clear images** even in ultra low light environments by combining infrared and visible light.

1. Hikvision DarkFighter PTZ cameras process colour and brightness independently, outputting one FULL-COLOUR image;
2. Efficient H.265 compression technology saves on bandwidth and storage.



Monitor parking spaces to provide evidence in the event of incidents such as vehicle accidents, thefts, and more.
PTZ cameras can provide a flexible people tracking function to keep a watchful eye over any suspicious individuals.

Car Park - Vehicle Entrance & Exit Management

ANPR Camera



Controls vehicle entrance and exit via number plate recognition.



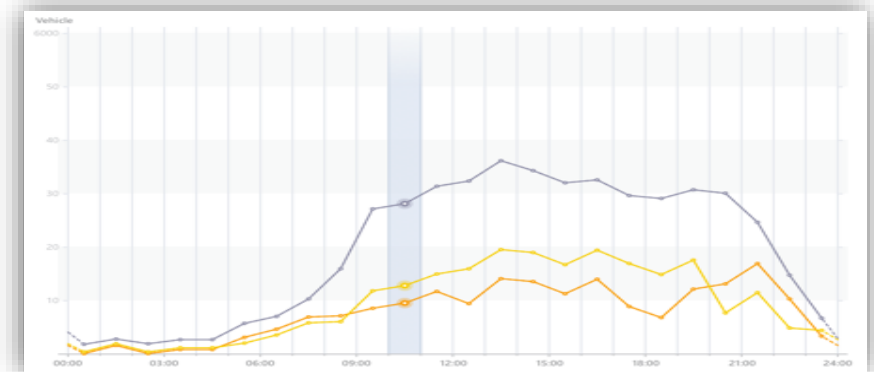
Number Plate Recognition & Recording

License Plate No.	Time	Owner	Phone No.
AS157L	15:33	Aaron	8845149
BQ22S4	15:41	Eason	6001544
NZS977	16:09	Peter	7632905

Automatically Releases Employee Vehicles

Warning on Blacklist Vehicles (Barrier Kept Closed)

Provides Reports on Passing Vehicles



Meeting Room

Smart Meeting

Simple, efficient and intelligent meeting

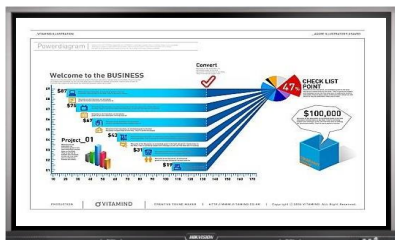


Panoramic Monitoring

The meeting room is a large interior area. Instead of deploying multiple cameras, a simpler and easier solution is required to cover the whole area without dead angle. What's more, people may feel uncomfortable when surrounded by many cameras. Using one panoramic camera can reduce such negative feeling.

Meeting Room - Smart Meeting

Interactive Display



Easy projection, convenient sharing and flexible comment contributes for a more efficient meeting.



Easy Projection



Built-in AP Hotspot



Multi-Screen Mode



Projecting max. 4 devices at the same time.

Built-in Whiteboard



1 mm writing accuracy and 20-point IR touch technology.

Flexible Comment



Flexible comments and easy sharing by scanning QR code.

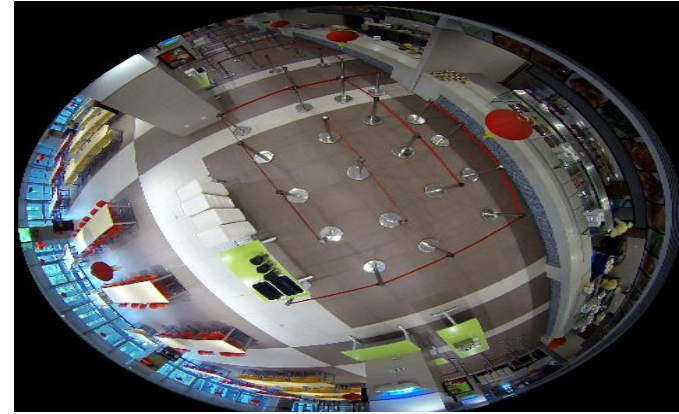
Meeting Room-Panoramic Monitoring

Fisheye Camera



One camera installed at the center of the ceiling to cover the whole office.

- Various expansion modes to present the panoramic view in conventional way of displaying
- High definition provides good image and details
- Fewer cameras means less installation and reduced labor cost



Meeting Room – Web camera

Work From Office



Video Conferencing



4 Fixing Modes

Suitable for different scenarios

Table

Laptop

Television

Tripod

Working Area



Access Control

Access control for authorised person only
Fire prevention and alarm.

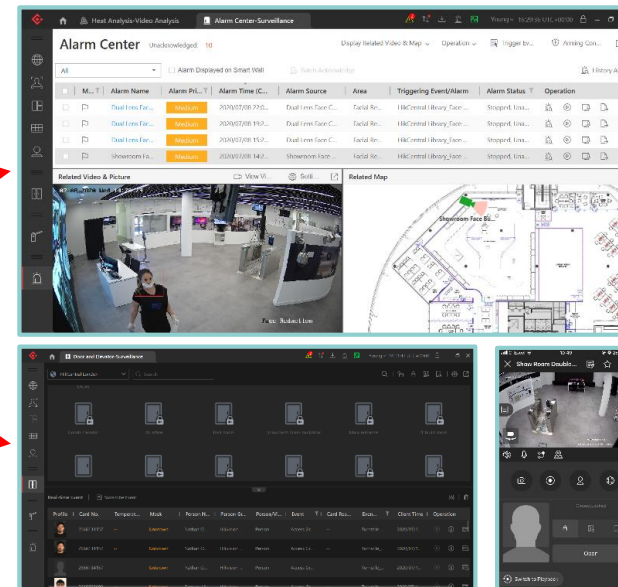
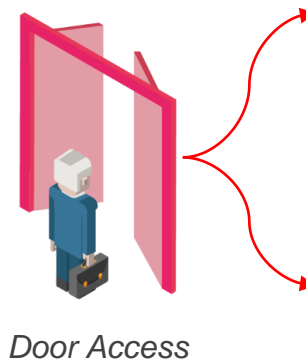
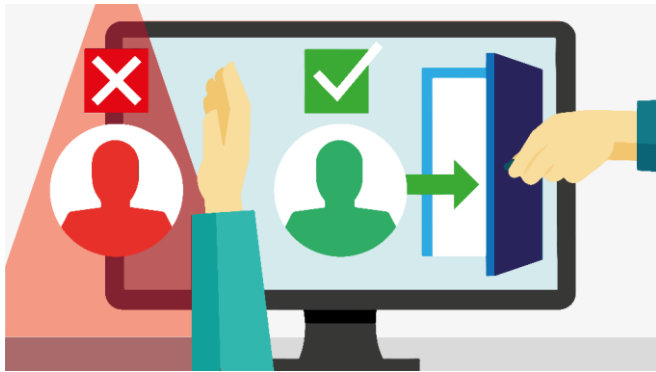
Office Time Attendance

Get attendance report at fingerprint terminal locally or on software remotely
Access control function, release door on Hik-Connect App remotely

Working Area - Access Control

How to only allow the authorised to enter the control room?

With Hikvision access control system, you can only assign the permission to the relevant person to enter the control room.



Abnormal access records in alarm centre

Video linkage & door operations via Control Client & Mobile Client

Working Area - Access Control

Access Control Devices

- Supports card, fingerprint, face authentication modes, **all in one terminal**.
- Built-in card reader, for **easy installation**.
- Cross-system linkage between CCTV and access control provides **situational awareness**.



Face Access
Terminal



HikCentral Professional
ACS license

Control Room

Video Management

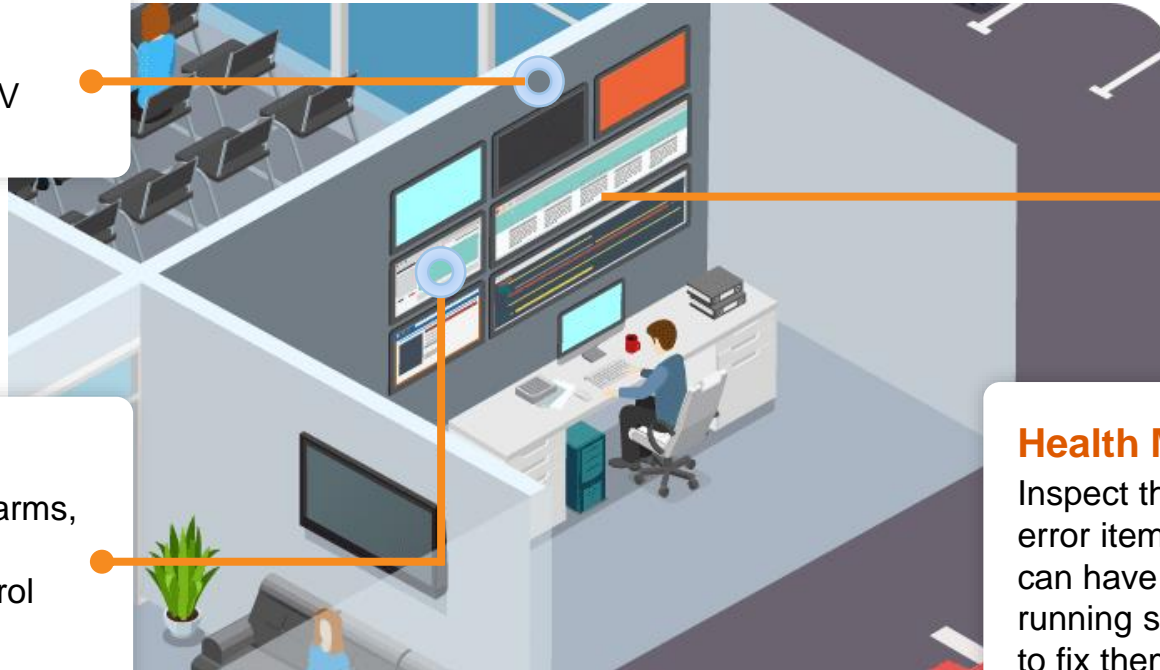
Security staff can manage the CCTV system in the control room.

Alarm Management

If there're intrusions, emergency alarms, etc., alarm signal will be sent to the control room. Operators in the control room will verify the alarm, and take reactions to handle it if real alarm.

Health Monitoring

Inspect the system status and display error items intuitively so that operators can have a grand view of the system running status, and find problems in time to fix them. Thereby, the system can always run healthy.



Control Room - HikCentral

Central Video Monitoring

HikCentral is completely centralised to achieve vast integration capabilities and deliver more powerful solutions.



Event & Alarm Management

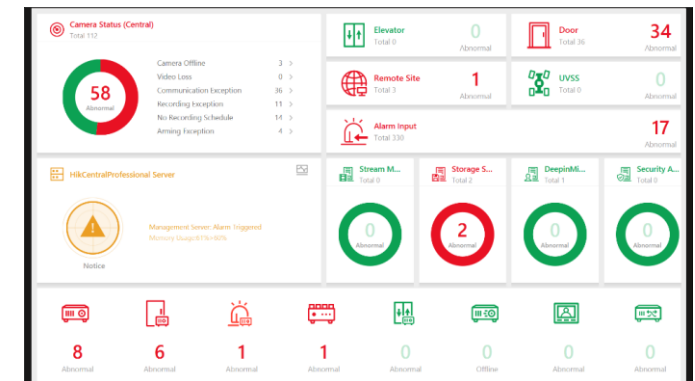
When there is an abnormal event, event and alarm management can guide you to the related video, picture and it's location (map), which helps you check what and where it's happening.



HikCentral Professional
BI Module

Health Monitoring

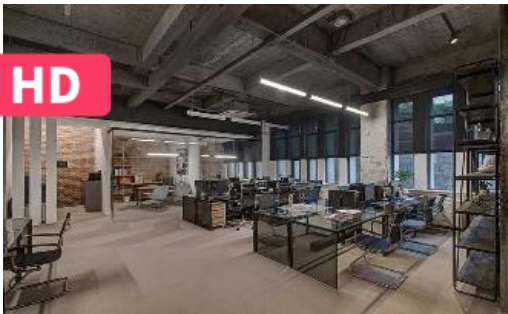
Ensures your surveillance system operates normally. Improves the efficiency of system maintenance instead of using manual manpower.



System Values

Higher Security Level

The advanced security system helps the hospital to detect risks in advance, generate real-time alarms, and provide evidence after the event, thereby comprehensively improving the security level of the hospital.



Improved Operational Efficiency

The integrated security system allows the security team to manage the hospital's security business centrally and efficiently. The centralised attendance check system and BI system help the office management team to raise operation efficiency.



Better User Experience

With the help of AI technologies, the hospital can optimize its services, providing a better experience for patients and visitors.





HikCentral Workstation/32

HikCentral Professional All-in-one Workstation is a cost-effective product that embedded with Windows system and HikCentral Professional (V1.7.1) software. You can achieve efficient management of video surveillance, facial recognition, ANPR, access control, video intercom, alarm management, etc. It is widely used in small to medium-sized enterprises, communities, etc.

HikCentral Workstation/32 Specification

Feature	HikCentral Workstation/32
Processor	Intel® Core™ i3-8100 (4Cores/6MB/4T/ 3.6GHz/65W);
Operating System	Windows 10 IoT Ent (64-bit)
Memory	2X4GB 2666MHz DDR4 UDIMM
Graphics Card	Integrated Intel® HD Graphics 630
Storage	M.2 256GB SATA Class 20 solid state drive
NIC	Integrated Intel I219-LM Ethernet LAN 10/100/1000
I/O Ports	10 External USB:1 x USB Type-C 3.1 Gen 2;5 x 3.1 Gen 1 Type-A (1 front, 4 rear),4 x USB 2.0 1 x RJ-45 2 x Displayport 1 x Serial 2 x PS/2
Form Factor	Small Form Factor
Power Supply	300W typical 90% Efficient PSU (80 PLUS Bronze);
Dimensions (H x W x D)	29cm x 9.26cm x 29.2cm (11.42" x 3.7" x 11.5")
Weight	17.57lbs / 5.26kg
Certification	CE,FCC,UL
Warranty	36 Months

Software Specification (Base on HikCentral Professional V1.7.1)

License	Max Performance (pre-activated)
All Cameras(including ANPR/Facial rec)	32-ch
ANPR Camera	4-ch
Facial Recognition Camera	2-ch
Door (including door station)	8-ch
Indoor Station	8-ch
Alarm Inputs from AX Pro	32-ch
HikCentral-P-Radar-1Unit	2-ch
HikCentral-P-Temp&Mask-Module	Enabled
HikCentral-P-EntranceExit-Module	Enabled
Data Storage	6 Months

Product Showcase

DarkFighter PTZ

- High quality imaging with 4 MP resolution
- Excellent low-light performance via DarkFighter technology



DS-2DF8425IX-AELW

Fisheye Camera

- Heatmap: based on deep learning algorithms, the camera counts people and presents an intuitive map
- Multi dewarping modes: the image can be dewarped to normal image for viewing intuitively
- Built-in mic and speaker: the camera supports two-way audio for real-time audio security monitoring and communication



DS-2CD63C5G0-I(V)(S)

2 MP ANPR Camera

- High quality imaging with 2 MP resolution
- Excellent low-light performance via DarkFighter technology



DS-2CD7A26G0/P-IZ(H)S

DeepinMind NVR

- Up to 16 channel deep learning video analysis for human and vehicle recognition to reduce false alarms
- Supports multiple VCA (Video Content Analytics) events



iDS-7732NXI-I4/16S(B)

Product Showcase

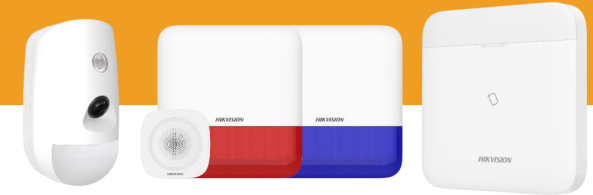
Pro Series Access Controller

- Access controller
- 100,000 cards and 300,000 events storage
- Communication via TCP/TP, ehome5.0 and RS-485
- ISAPI, OSDP supported



DS-K2600T

AX PRO



AX PRO Kit

- Slim design for an unobtrusive (unnoticeable) installation
- Fully remote configurable through App
- Multiple enrollment methods and easy installation design

KH8 Series Pro Modular Door Station

- Modular door station Main unit, needs mounting bracket
- 2MP HD Camera, Fish eye, IR Supplement
- 1 Call physical Button, 2 lock relays, 4-ch alarm input



DS-KD8003-IME1/S

KH8 Series Indoor Station

- Premium tempered glass
- Aerospace-grade aluminum



DS-KH8350-WTE1



MinMoe Access Control Terminal



Flexible Deployment

Supports wall mounting and floor standing with mounting pole.



Visualised Temperature Screening

7-inch touch screen. Temperature screening with visual results and audio prompt.



Thermographic Technology

Measures the temperature of a forehead thermographically after face detection.

DS-K1T671TM-3XF



High accuracy of temperature screening

Temperature range: **30°C to 45°C***



Mask Detection

Supports face mask wearing alerts and compulsory mask wearing alerts.
Temperature screening with mask.



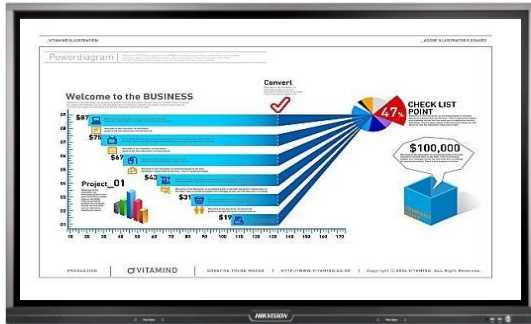
Touch-free temperature screening

Authentication distance: 0.5-1.5 m.
Authentication height: 1.4-1.9m.

Product Showcase

Interactive Display

DS-D5A65RB/A



- UHD 4K resolution
- 65 Inches
- 10m² (2-10 people)
- Dual operating system: Android by default, Windows optional
- 1 mm write accuracy, better writing experience

Digital Signage Box

DS-D60C-B



Portrait and landscape



Built-in Wi-Fi



Built-in 32 GB SD Card



Full HD video (Up to 4K)



Longer service life



24/7 operation

Web Camera



4K Ultra HD Camera

DS-U18

- 8 MP (3840 × 2160 @ 30 fps)
- FOV: horizontal 79°, vertical 43°, diagonal 92°
- Plug and Play: Type-C interface, USB 3.0
- Built-in Dual Mic



1080p HD Camera

DS-U12

- 2 MP (1920 × 1080 @ 30 fps)
- FOV: horizontal 81°, vertical 50°, diagonal 90°
- Plug and Play: Type-A interface, USB 2.0
- Built-in Mic



Ultra HD Video



High Fidelity Stereo Pick-up



Wide Angle for Large Scene



Beauty Filter



Self-adaptive Brightness



Compatible for Multiple App

HIKVISION® Density Control Solution



To enable social distancing, it's imperative that buildings and facilities limit the number of people allowed inside.

Our **Density Control Solution** automatically provides clear signage and ways to avoid overcrowding.

Solutions



Single Door Camera Standalone Density Control Solution

- Ideal for small shop
- Fast deployment and cost effective, only one camera and one monitor required
- Basic numeric data shows number of people in premises
- Real time alert and voice prompt from camera when threshold is reached



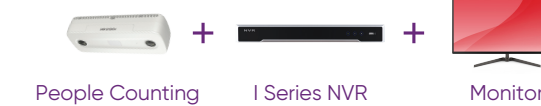
Single Door with I Series NVR Density Control Solution

- Ideal for retail shop with single entrance/exit
- User friendly and informative real time data screen displays maximum number accepted and current number inside store with green or red warning signs
- Ideal for placing near entrance, so customers can identify the display
- Fast deployment, only one camera, one NVR and one monitor required



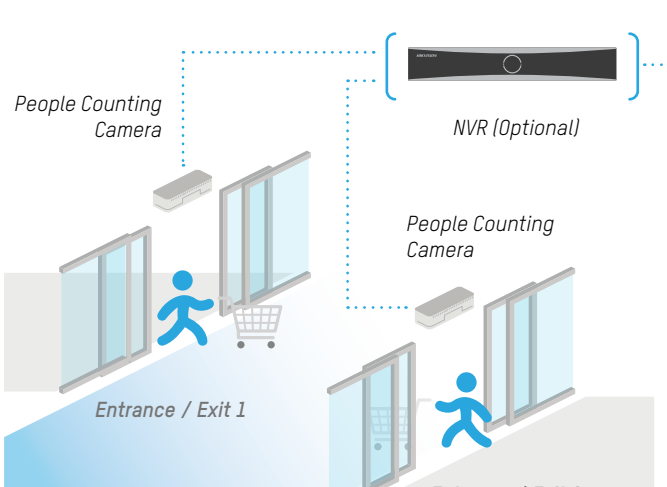
Multi-Door I Series NVR Density Control Solution

- Ideal for multi entrance/exit market.
- NVR calculates the total figure from all the cameras and displays intuitive real time data with warning symbols



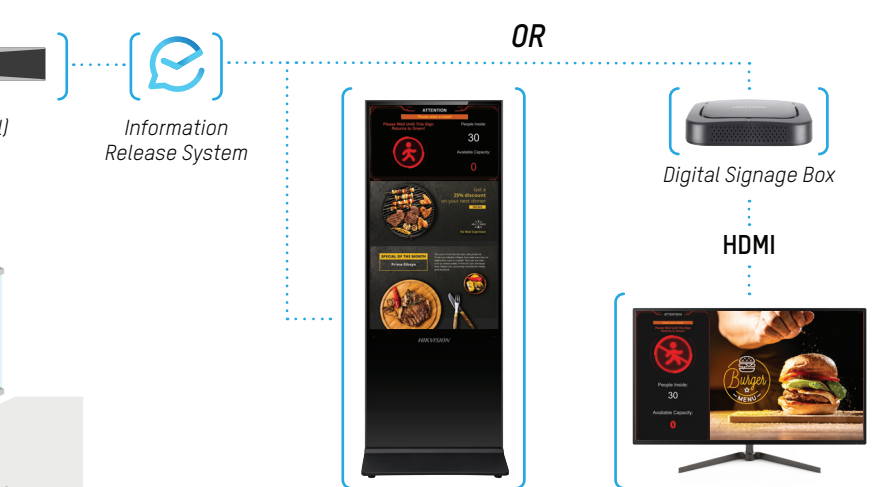
Multi-Door HikCentral Density Control Solution

- Ideal for large sites with multiple entrances and exits like markets places, supermarkets, depots and distributions centres across multiple locations
- HikCentral software calculates the total figures from all the cameras and displays intuitive real time data with warning symbols
- Central management to view and review whole system via HikCentral software
- Business intelligence reports for further analysis



Digital Signage Density Control Solution

- Ideal for shops, restaurants or any premises where you need to control the number and flow of people.
- Fast to deploy and cost effective, with only one camera, monitor and digital signage box required.
- Basic numeric data shows number of people on premises. Real-time alert and voice prompt from camera when threshold is reached.
- When a customer without a mask is detected, a customised text prompt will pop up.
- Can play advertising images or videos in a loop.



Products

Camera Option 1



Dual-Lens People Counting Network Camera
DS-2CD6825G0/C-I(V)(S)

- 1920 × 1200 @ 30fps
- 2 mm fixed lens
- 1/2.8" Progressive Scan CMOS
- IP66, IK08

Camera Option 2



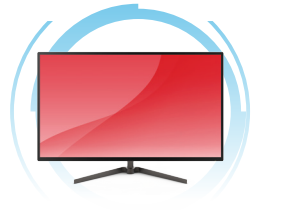
AcuSense Camera
DS-2CD2746G2-IZS

- 4 MP resolution
- Powered by Darkfighter Technology



I Series NVR
DS-76/77/96NI- I series NVR

- H.265+ compression effectively reduces the storage
- HDMI Video output at up to 4K resolution



Monitor
DS-5022FN

- 1080P
- HDMI/VGA input
- Plastic casing
- VESA
- Base bracket included
- 7*24h



Digital Signage Box
DS-D60C-B

- Support schedules or self-defines any audio, pictures, documents and videos that will be displayed
- Powered by Android 6.0.1
- 4K HDMI output, works with normal monitors or LCD/LED video walls



HikCentral VMS

- HikCentral Pro provides video management system and intelligent Analysis



PoE Switch
DS-3E010SP-E(B)

- L2
- Unmanaged
- 10/100M RJ45 PoE ports



PoE Switch
DS-3E0109P-E(C)

- L2
- Unmanaged
- 10/100M RJ45 PoE ports



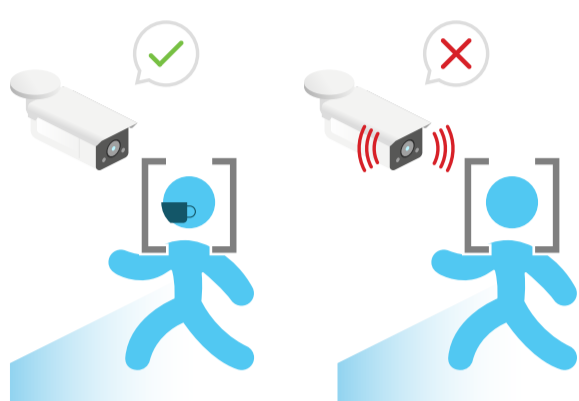
HIKVISION®

Mask Detection Solution



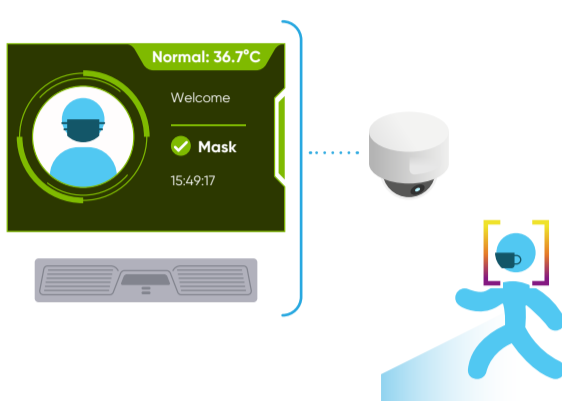
Hikvision's new **Mask Detection Solution** detects if an individual entering your premises is wearing a mask or not - with advanced solutions available to also detect and display skin-surface temperature.

Solutions



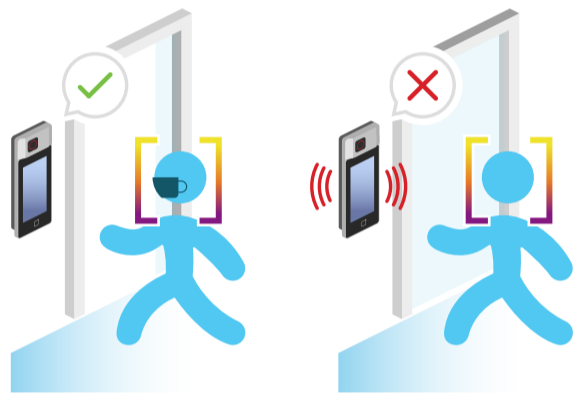
AcuSense Camera Mask Detection Solution

- Ideal for small premises
- Real time alert and voice prompt from camera when an individual is not wearing a mask
- Fast deployment and cost effective, only one camera required



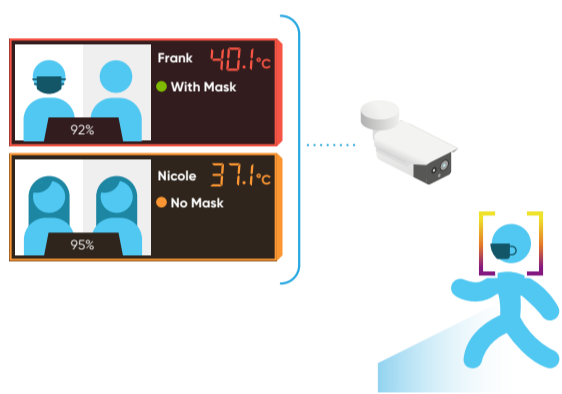
Conventional Camera Solution Mask Detection Solution

- Ideal for premises with existing conventional camera
- Efficient history search & export by mask status or by face
- Multi-location intuitive display of abnormal temperature or no-mask alarm (red = elevated temperature; amber = no mask, green = mask detected, safe temperature)



MinMoe Terminal Mask Detection Solution

- Ideal for touch free access control terminals placed at entrances
- MinMoe can also perform skin temperature screening and mask detection at the same time
- Access denied can be selected if no mask is detected



Temperature Screening Camera Mask Detection Solution

- Ideal for main entrances to premises to screen peoples skin temperature as well as detect face masks
- Efficient historical search & export by temperature alarm, by mask status or by face
- Onsite viewing and centralised management of alarms, video and temperature results



Products



AcuSense Camera
DS-2CD20X6G2-IU/SL



AcuSense Camera
DS-2CD23X6G2-ISU/SL



AcuSense Camera
DS-2CD2TX6G2-ISU/SL



AcuSense Camera
DS-2CD26X6G2-IZSU/SL

- Excellent low-light performance with powered-by-DarkFighter technology
- Clear imaging against strong back light due to 120 dB true WDR technology
- Efficient H.265+ compression technology



Thermographic Bullet Camera
DS-2TD2636B-15/P
DS-2TD2636B-13/P
DS-2TD2637B-10/P



Thermographic Bullet Camera
DS-2TD2617B-3/6PA



Thermographic Turret Camera
DS-2TD1217B-3/6PA

- High sensitivity thermal module
- Leading thermal image processing technology



MinMoe Terminal
DS-K1T671TM-3XF

- 7-inch touch screen
- Audio prompt



I Series NVR
DS-76/77/96NI- I series NVR

- H.265+ compression effectively reduces the storage
- HDMI video output at up to 4K resolution



DeepinMind NVR
IDS-/77/96NXI-I/X(B) Series
IDS-6708NXI-I/F

- H.265+ compression effectively reduces the storage
- HDMI video output at up to 4K resolution



VMS
HikCentral

- HikCentral Pro provides video management system and intelligent Analysis

HIKVISION[®]

Digital Display Solution

Diversified Advertisement Media Player



WHAT IS DIGITAL SIGNAGE?

HIKVISION[®]



01

A Digital Display

Publishing ads, news, notifications, and lots of multi-media content.



02

An Intelligent System

Making and editing programs online, setting schedules, and intelligently controlling terminal devices.

NEW ADVERTISING TRENDS

HIKVISION[®]



Conventional Advertising

- Traditional posters, display panels, roll-ups, light boxes
- Boring content: mainly text and pictures
- One-time use: not updated in real time
- High costs of production, installation and replacement
- Difficult management

New Advertising - Digital Display

- Supports various media formats, rich and colourful
- Online program production, timely updates
- Intelligent software management
- Unified and orderly terminal management
- Safe and efficient program release

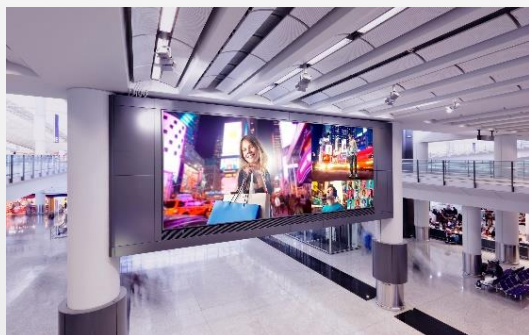
NEW DISPLAY EVOLUTION

HIKVISION®



Internet

No longer subject to distance constraints



Digital Signage Box can bring existing offline monitors online to enable unified management, increasing the efficiency of display resources.

HIKVISION DIGITAL DISPLAY SOLUTION



New Advertising Trends

The Hikvision Digital Display Solution, with multiple product types and a wide range of applications, provides a new opportunity: combined with thermal cameras it can offer highly efficient skin temperature screening, as well as displaying density control information and advertising in public areas in a multitude of scenarios.



Fast Deployment



All-in-One



Remote Management / Control



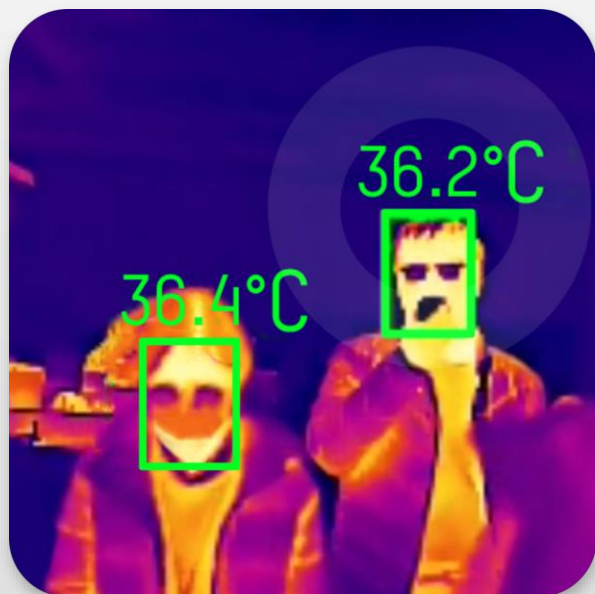
Powerful Information Release Software



SOLUTION INTRODUCTION

HIKVISION

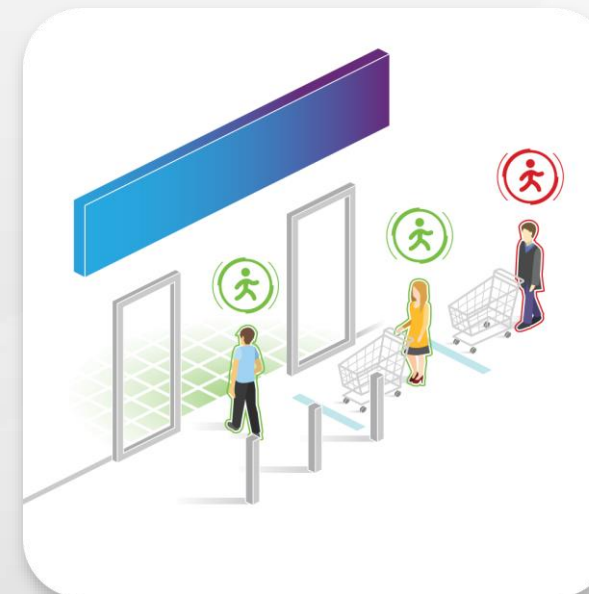
Temperature Screening



Face Mask Detection



Density Control



Our Digital Display Solution works together with our multiple technologies and products to present real-time live information and alerts

TEMPERATURE SCREENING & MASK DETECTION SOLUTION

HIKVISION[®]



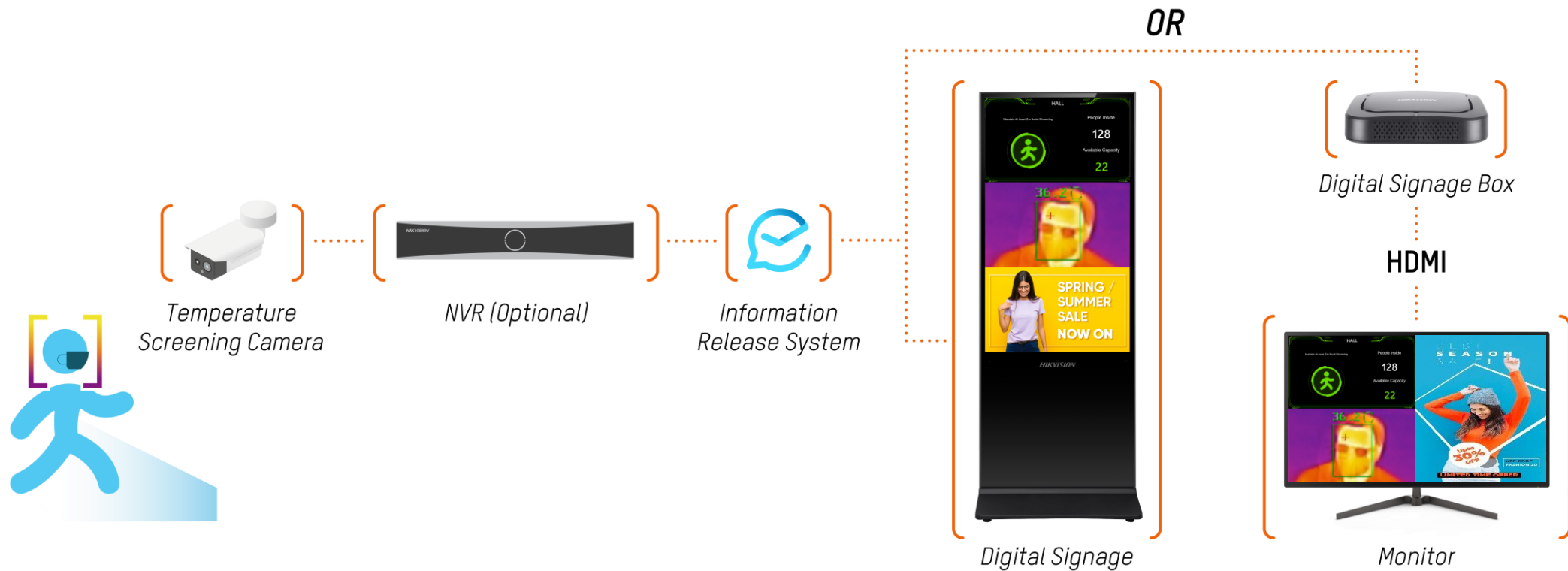
- **Temperature screening:** Displays the image of thermal camera and temperature detection results.
- **Mask Detection:** When a customer without a mask is detected, a customized text prompt pops up.
- **Multimedia Advertising:** Broadcast various advertising programs instantly or as scheduled.
- **Multiple Applications:** Ideal for a variety of entrance/exit scenarios e.g. office buildings, schools, retail stores and hospitals.

Advantages

- Fast Deployment
- Contactless Temperature Screening and Alarm
- Playing Advertisements

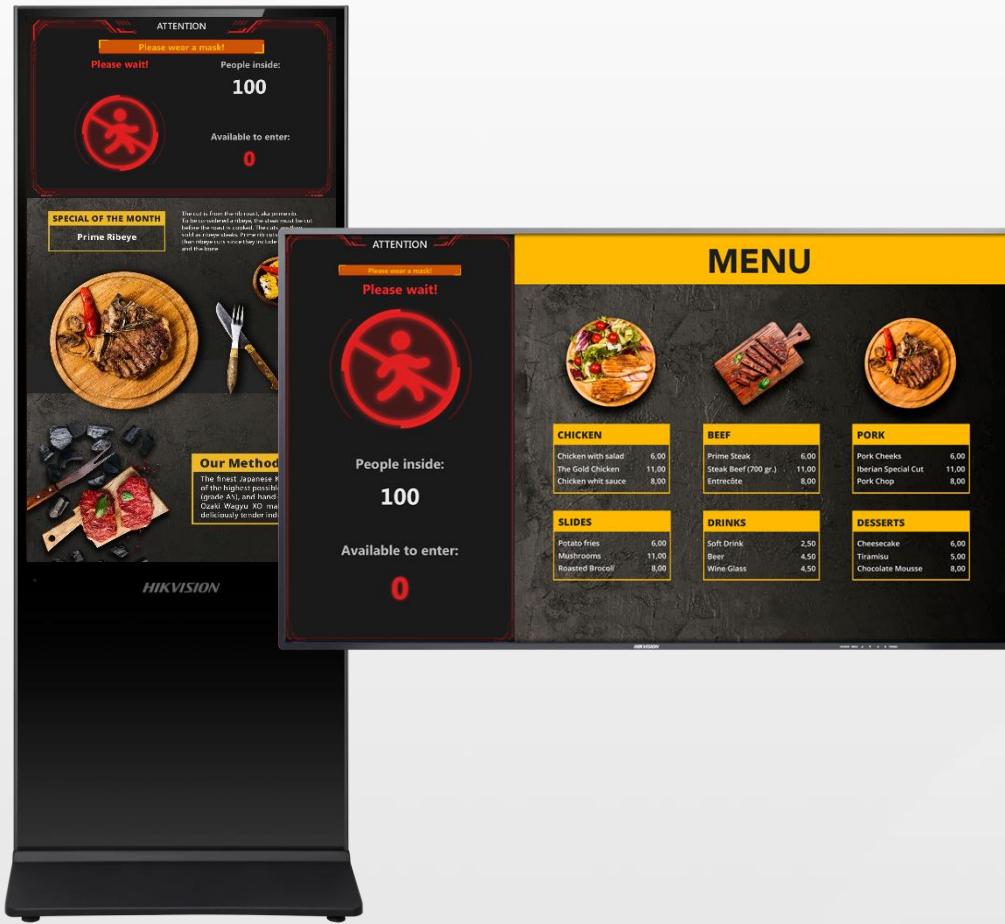
TEMPERATURE SCREENING & MASK DETECTION TOPOLOGY

HIKVISION[®]



DENSITY CONTROL SOLUTION

HIKVISION[®]



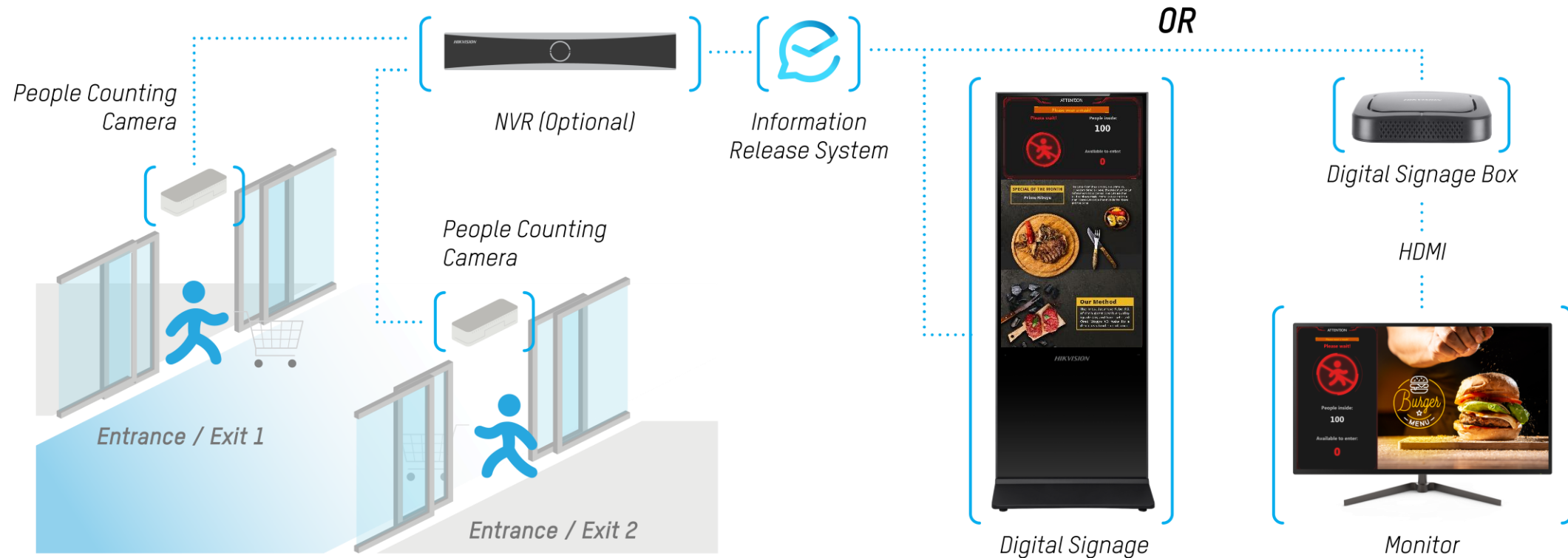
- **Density Control:** Displays the number of people who have entered the premises and the number of people who can still enter. Alerts if the configured maximum number is exceeded.
- **Easy installation:** Fast deployment and simple connection to the existing network, with no additional monitor required.
- **Multimedia Advertising:** Broadcast a variety of advertising programs instantly or as scheduled.
- **Multiple Applications:** Ideal for a variety of entrance/exit scenarios e.g. office buildings, schools, retail stores and hospitals.

Advantages

- Fast Deployment
- Density Control Alarm
- Plays Advertisements

DENSITY CONTROL TOPOLOGY

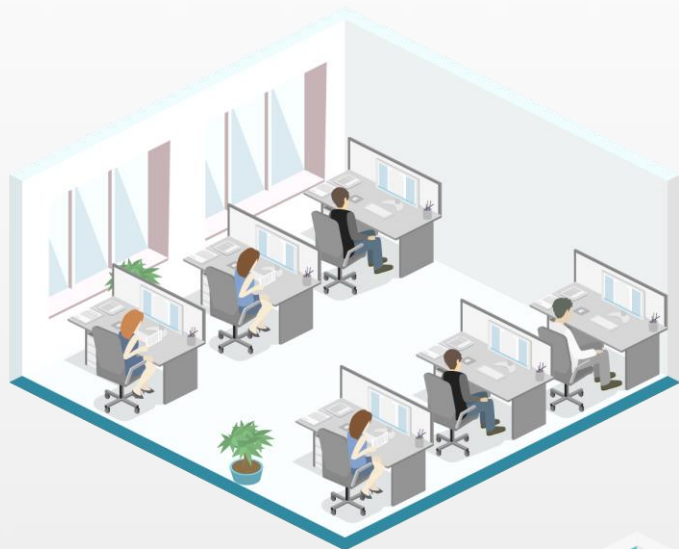
HIKVISION®



* Up to 256 x people counting cameras can be connected

RECOMMENDED SCENARIOS

HIKVISION[®]



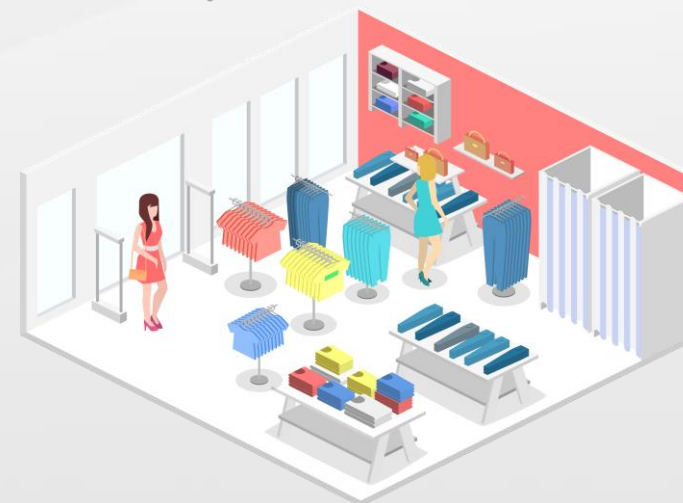
Office Building



Supermarket



Hospital



Retail

DIGITAL SIGNAGE BOX

HIKVISION®

Mainly used for publishing information on conventional display screens

DS-D60C-B



Cost effective
Only one camera,
one monitor and
one digital signage
box required.



Small size
Easy to use



4K output
Ultra-clear



Remote control
Convenient operation



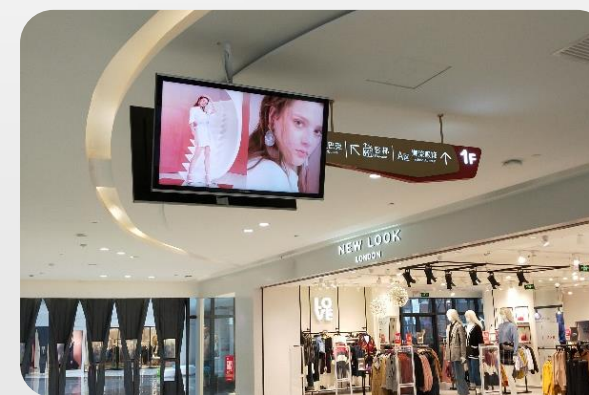
Monitoring display
Live broadcast



LED Display



LCD Display



Normal display

PRODUCT HIGHLIGHTS

HIKVISION[®]

Full HD video
(Up to 4K)



Longer service life

Landscape and
Portrait Mode



24/7 operation

Built-in Wi-Fi



Build-in 32 GB
SD Card



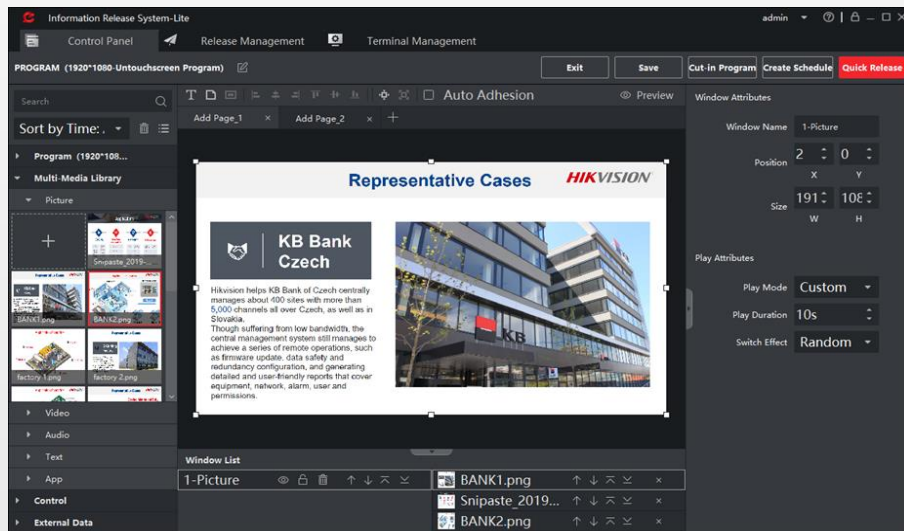
DS-D60C-B

INFORMATION RELEASE SYSTEM

HIKVISION[®]



FocSign Lite Software



Control Panel
Manages the editing of program listings, supports online preview



Release Management
Check released programs and release status



Terminal Management
Quickly add devices in the same LAN



Set Schedule
Set schedule, support program drag adjustment



Insert Text Message
Adjust and preview text messages in real time

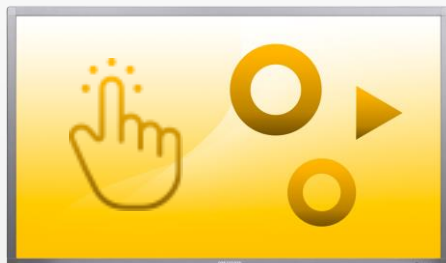


Make Programs
Online editing for quick information release

PRODUCT SHOWCASE

HIKVISION[®]

Wall-Mounted



Touchscreen

- 22" DS-D6022TL/FL-B
- 32" DS-D6032TL/FL-B
- 43" DS-D6043TL-B
- 55" DS-D6055TL-B



Narrow Bezel

- 43" DS-D6043FN-B
- 55" DS-D6055FN-B



Narrow Bezel & 4K RGB

- 55" DS-D6055UN-B

Floor-Standing

- 43" DS-D6043FL-B/S
- 55" DS-D6055FL-B/S



Digital Display Box

DS-D60C-B

